

Hilo Hawaiian Hotel



2016 FACT SHEET

HILO HAWAIIAN HOTEL | HAWAII ISLAND

71 Banyan Drive Hilo, Hawaii 96720 | P: +1 (808) 935-9361 | F: +1 (808) 961-9642 | www.HiloHawaiianHotel.com

Hilo Hawaiian Hotel is the highest rated, oceanfront hotel in Hilo, near Hawaii Volcanoes National Park. Enjoy newly renovated spacious guest rooms and one-bedroom suites with garden, ocean or summit views of Mauna Kea. Amenities include meeting and banquet facilities, a restaurant, lounge, iCafé, and swimming pool.

HILO HAWAIIAN HOTEL 286 Rooms | 8 Floors | 3 Guest Elevators

SERVICE

- Check-in: 3 pm
- Check-out: 12 noon
- 24-hour front desk
- Bell service (6 am - 9 pm)
- Daily housekeeping
- Wake-up service
- All major credit cards accepted
- TLA and FEMA approved

RECREATION & ENTERTAINMENT

- 9-hole golf course nearby
- Tennis courts nearby
- Walking trails and picnic areas at Queen Liliuokalani Gardens and Coconut Island Park nearby
- Water activities, including kayaking, surfing, snorkeling and scuba tours nearby

RESTAURANTS & LOUNGES

- Queen's Court Restaurant
Ala carte & Buffet breakfast daily
6:30 am - 9:30 am
Ala carte dinner Mon. - Thurs.
5:30 pm - 8 pm
Buffet dinner Fri. - Sun.
5:30 pm - 9 pm
Buffet Brunch, Sun.
11:00 am - 2:00 pm
- Waioli Lounge & iCafé
Lounge located in the lobby
iCafé: opened daily
7am-5pm
fresh locally grown coffees, lattes, espresso, cappuccinos, pastries, & a light lunch menu
Lounge: opened daily 5 pm
dinner menu & appetizers
wine & cocktails
live weekend entertainment

HOTEL AMENITIES

- FREE parking
- FREE WiFi in lobby & lounge
- Gift shop
- High speed Internet kiosk in the lobby with printing (\$)
- Ice machines
- Laundry facility (\$) (open 6 am - 10 pm)
- Safety deposit box
- Soft drink machines
- Sun deck
- Swimming pool

EVENT SERVICES

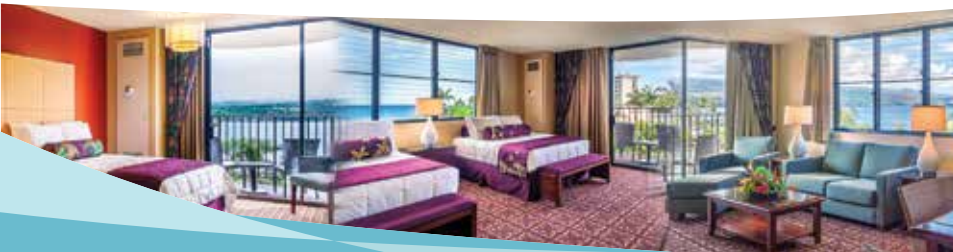
- Event catering
- Private parties available
- Event planning services
- Event setup
- Wedding planning services
- Wedding ceremony services

ROOM AMENITIES

- ADA compliant rooms
- Air conditioning
- Clock/radio
- Coffee maker
- Flat-screen television
- Hair dryer
- High speed Internet access (\$)
- In-room refrigerator
- Iron/Ironing board
- Lanai (most rooms)
- Non-smoking rooms available
- Phone & voicemail
- Shower/tub

GDS

- Galileo WV73586
- Sabre WV10995
- Amadeus WVTOHHH
- Pegasus WVCASHH
- Worldspan WVHILO



GUEST ROOMS

Category	Type of Bedding*	Published Rates**	Guests	Max Pax	Area ft ²	Area ft ² incl. Lanai
Standard	1K or 2D	\$157-209	1-2	4	347	397
Superior	1K or 2D	\$172-229	1-2	4	347	397
Ocean View	1K or 2Q	\$187-249	1-4	4	376	426
Junior Suite	1K	\$217-289	1-2	3	542	642
1 Bedroom Banyan View	2Q	\$277-369	1-4	5	606	706
1 Bedroom Ocean View	2Q	\$308-410	1-4	5	748	848

*Type of Bedding: K=King Q=Queen, D=Double - Type of Bedding requests are subject to availability and determined upon arrival. Extra bedding charges apply and are subject to availability. **Rates vary by season, year-end pricing may apply. Blackout Dates may apply. Rates are subject to applicable taxes. Rates and taxes are subject to change without notice. Area footage is approximate and can vary per unit. Additional fees may apply.

DISTANCE FROM

- Hilo International Airport - 2.6 miles
- Downtown Hilo - 1.6 miles
- Volcanoes National Park - 29.3 miles
- Punalu'u Black Sand Beach - 58.5 miles
- Waikoloa Beach Resorts - 74.5 miles
- Kailua-Kona - 100 miles
- Kona Airport - 93.3 miles
- Mauna Kea Observatory - 44.2 miles



WORLDWIDE RESERVATIONS

For reservations, please contact our reservations office, your travel consultant, book online at: www.castleresorts.com, or via email at: reservations@castleresorts.com.

Worldwide Direct: +1-808-545-3510
 Toll-Free (U.S., Canada, & Saipan): +1-800-367-5004
 Fax: +1-808-545-2163
 Email: reservations@castleresorts.com